



寓陽實業有限公司
JUN YAN AUTO INDUSTRIAL CO., LTD.

總公司:台南市704文成路121號

HEAD OFFICE: 121, Wen-cheng Road, 704, Tainan, Taiwan

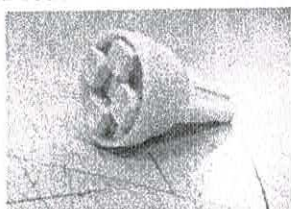
TEL: +886-6-2833866/2812356 FAX: +886-6-2812359

E-MAIL: junyan.auto@msa.hinet.net

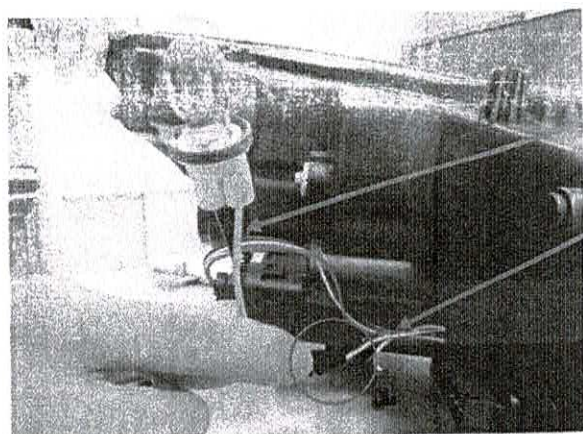
INSTRUCTION FOR OPEL ASTRA J Head Lamp

There are two types that you can choose to light up the signal lamp.

Step 1: Please find attached "LED bulbs", see photo as below.



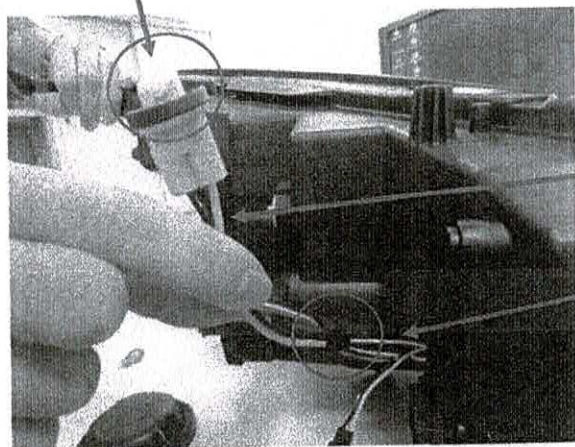
Step 2: Take out amber bulb from the head lamp and install "LED bulb" instead, and note to disassemble wires of indicator (photo A) then connect wires of LED bulb to White/Black wires (photo



Yellow/Black wires

Yellow/Black wires

LED Bulb (white ray)

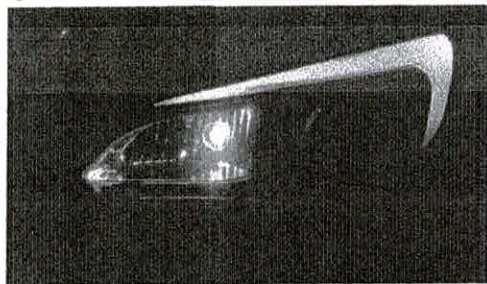


Yellow/Black wires

White/Black wires

Step 3: Once finish installation of photo B, please do the testing from photo A again. Don't forget to take photos of function testing.

Installation of photo A will see the following outcome, see as photo.



Installation of photo B will see the following outcome, see as photo.



This installation is suitable for car owners whose indicators are on the bumper. When turning on "Position Light", both light bar and LED bulb will

All above steps, please check if fitment is perfectly and functions are testing without problems, particularly check if there is warning sign showing if all fitment and testing without inverters, thank you.



寓陽實業有限公司
JUN YAN AUTO INDUSTRIAL CO., LTD.

總公司:台南市704文成路121號

HEAD OFFICE: 121, Wen-cheng Road, 704, Tainan, Taiwan

TEL: +886-6-2833866 TEL: +886-6-2812356

FAX: +886-6-2812359

E-MAIL: junyan.auto@msa.hinet.net

Instructions For Electric Adjustment Motor & Manual Adjustment

Definition:

E: It stands for using "original levelling motor" (OE motor).

EM: It stands for using "manual adjustment apparatus".

E1: It stands for using "JUN YAN electric adjustment motor"

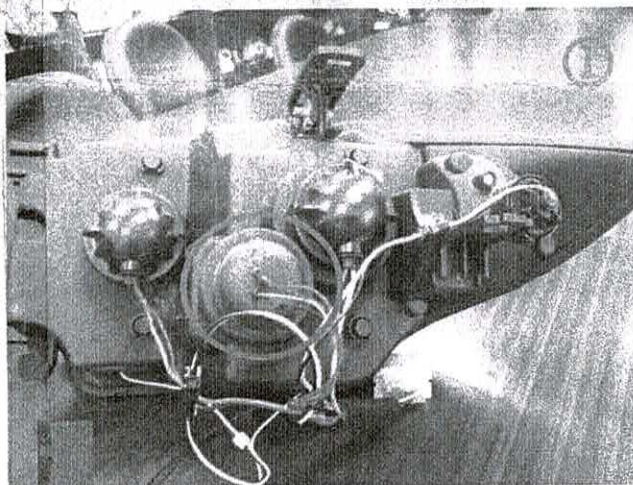
For instance:

HU258E-00-1-E → Install "OE motor" and adjust up and down of Hi/Low beam.

HU341EM-02-1-E → Adjust up and down of Hi/Low beam by manual bolt.

HU353E1-02-1-E → Adjust up and down of Hi/Low beam by JUN YAN electric motor.

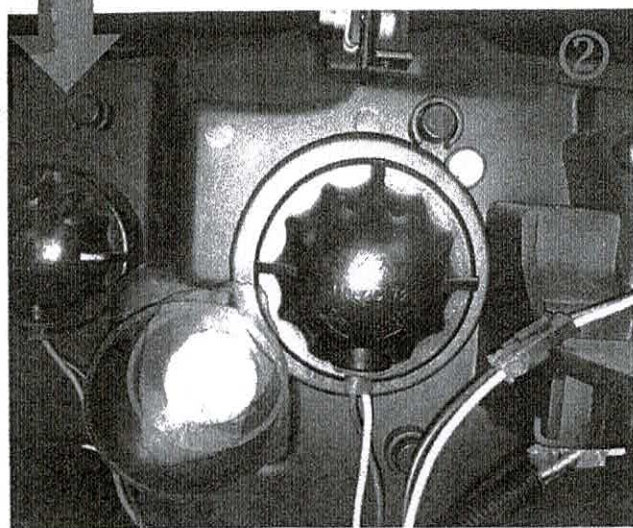
Situation I - Instruction for installing "OE motor" onto JUN YAN head light.



Example: HU258E-00-1-E

Picture 1:

Remove rubber cap from the levelling adjustment position.



Picture 2:

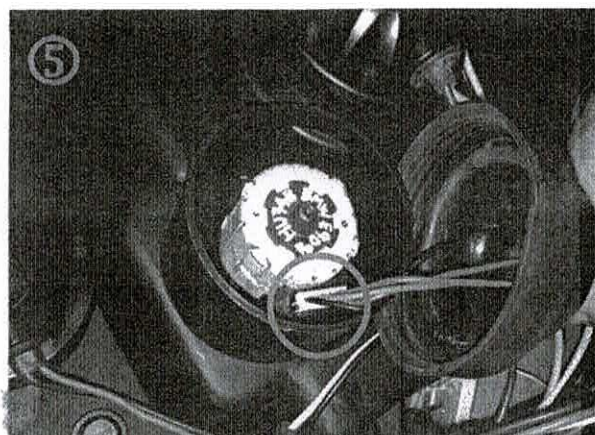
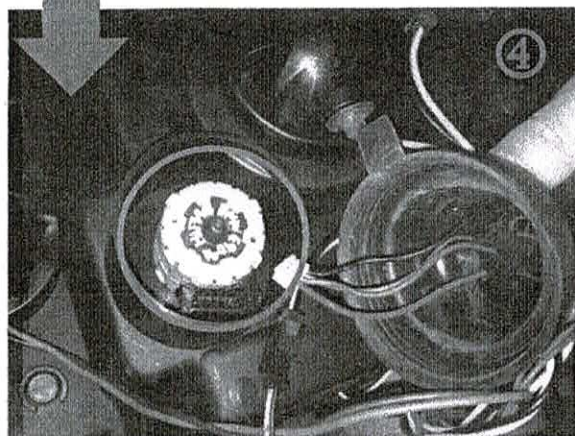
Loose JUN YAN manual adjustment apparatus (bolt).



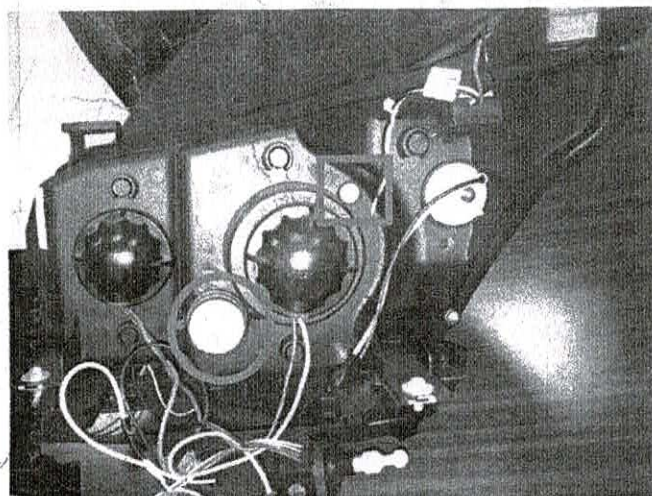
Picture 3:
OE electric adjustment motor

Picture 4:
Install OE electric adjustment motor into socket hole.

Picture 5:
Connect wires to power up the motor, then cover back the rubber cap.



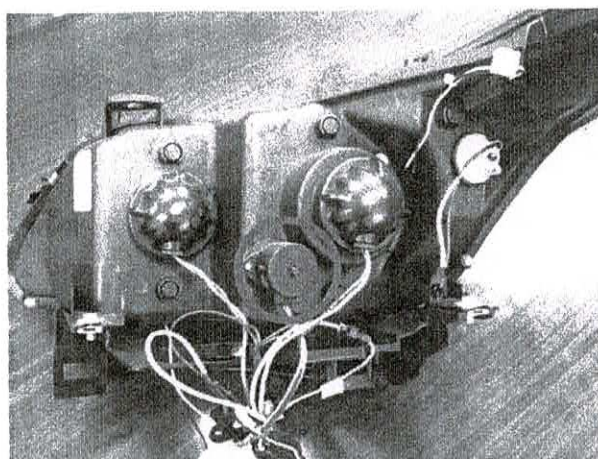
Situation II - Hi/Low beam adjustment by manual bolt.



Example: HU341EM-02-1-E

The circle in picture on the left, there is one bolt that you can adjust up and down for the lighting angle and, in the meanwhile, adjustment screw in the square which is to adjust left and right. With two adjustment bolt and screw, you can adjust lighting angle aiming at the road properly.

Situation III - Hi/Low beam adjustment by JUN YAN electric adjustment motor.



Example: HU353E1-02-1-E

When you buy "E1" type JUN YAN head lamp, the electric adjustment motor is basically equipped onto the head lamp already, so you can simply install the head lamp in car and adjust the lighting angle in the car as you need.